

MARS II

de KARL VAN WELDEN

Fiche Technique

Version pour Black-Box

Cette fiche technique donne une idée générale des besoins techniques et peut être adaptée en fonction des spécificités du lieu.

INTRODUCTION

MARS II est un récit poétique de la façon dont un fait inattendu peut influencer notre manière de penser. Dans cette performance musicale Karl Van Welden travaille à partir de l'impact de la cendre volcanique sur la musique et sur le pianiste (Frederik Croene) en train de jouer. Dès le début, de fines particules grises tombent doucement et sans conséquence. Petit à petit les particules tombent de plus en plus nombreuses sur le musicien et son instrument transformant, lentement mais sûrement, le son en image.

Trailer: <https://vimeo.com/unitedplanets/marsii/trailer>



1. CONDITIONS GENERALES

Durée: 1h20 sans interruption
Dimensions minimales: Minimum 14m d'ouverture, 9m de profondeur, 6m de haut
Sol: Noir. Si un tapis de danse noir est nécessaire, merci de le poser avant notre arrivée.

2. DECOR

Voir le schéma d'implantation en annexe

2.1 Dispositif pour la pluie de cendres

Nous apportons une "machine à pluie de cendres" qui se compose de 6 grilles en aluminium de 3m x 3m (repliables en 12 x 3m x 1,5m ou 24 x 1,5m x 1,5m) suspendues au-dessus de la scène. Chaque grille pèse +/- 50kg soit 150kg par groupe de 3 et 300kg au total.

Les grilles doivent pouvoir monter et descendre, de préférence par groupe de 3, afin d'être chargées et nettoyées. Les configurations suivantes sont possibles :

- Dans un théâtre avec un système de perches mobiles:
En utilisant 2 perches mobiles distantes de 1,5 m auxquelles les grilles sont accrochées et 1 perche supplémentaire au centre pour les élingues de sécurité (3 perches mobiles par groupe de 3 grilles donc 6 perches mobiles en tout)
- Dans une salle avec des perches fixes
En utilisant un truss de 9 de long, carré ou triangulaire sur lequel sont fixées 6 perches transversales de 1,5m et 2 palans électriques (par groupe de 3 grilles, donc 2 truss de 9m, 12 perches de 1,5m et 4 palans électriques en tout)

Les grilles sont chargées de pétales de cendre artificielle appelées "Foss decor" ainsi que d'un matériau d'isolation appelé vermiculite. Nous apportons un grand aspirateur afin de recycler les matériaux.



2.2. Contrôle des grilles

Les grilles sont équipées de «Buttkickers» (vibreurs basses fréquences pour home cinéma) contrôlés manuellement sur scène par une personne de notre équipe.

Nous apportons

- 2 ampli
- 1 boîtier de contrôle (générateur de fréquences 6-circuits)
- 6 câbles pour enceintes
- 1 caméra avec une sortie HDMI

L'organisateur fournit

- une petite table dans l'une des coulisses
- du courant en 230VAC/16A
- 6 câbles speakon (la longueur dépend de la hauteur des perches)
- 6 coupleurs speakon femelle-femelle
- **une connexion HDMI vers la régie**
- un moniteur compatible avec une sortie HDMI

2.3. Textiles

Nous apportons

- Une gaze transparente (tulle gobelin) de 12x6m suspendue et tendue devant la scène

L'organisateur fournit

- une boîte noire complète (fond ET côtés !)
- 4 pendrillons (aile latérale) de 2m de large min de chaque côté et 2 frises de 12m de long

3. SON

Nous apportons

- A baby grand piano (Kawai S-500, 1969), équipé avec un système d'automatisation QRS (<http://www.qrsmusic.com>), **dans un flight-case (400kg) , dimensions, 230cmx 195 cm de haut 60de large**
- Un ordinateur mini-Mac et une carte son, installés en régie
- Un micro contact AKG installé dans le piano
- 2 micro AKG C516 pour amplifier le piano

L'organisateur fournit

- 2 enceintes full range au lointain, derrière le fond de scène, posées sur le sol.
- un système avec des sub en façade. La façade doit être retardée par rapport aux enceintes sur scène
- Une console de mixage avec 4 sorties, façade et scène et 3 entrées micro.

Nous avons besoin des connexions suivantes au centre de la scène

- 1 alimentation 230VAC/16A
- **1 connexion Ethernet UTP/RJ45 qui va vers la régie!**
- 2 connexions XLR (midi) vers la régie
- 3 connexions XLR (micros) vers la régie

4. LUMIERE

Voir le schéma d'implantation en annexe

Fourni par la compagnie:

- 10 ventilateurs
- des rubans LED contrôlés par DMX (DMX 3-pin)
- une console lumière Chamsys avec une sortie DMX 5-pin

A fournir par le théâtre:

Projecteurs:

- 7 découpes 1kW 15°-38° équipées de couteaux
- 2 Fresnel 1kW équipés de volets
- 18 PC 1kW équipés de volets

- 2 tours pour 2 ventilateurs chacune (nous apportons les ventilateurs)
- 8 tours/pieds de projecteur hauts dans les coulisses
- 13 platines de sol pour PC's

- les projecteurs sont branchés sur des canaux séparés et identiques (+/- 36 circuits de 1kW)
- Une ligne DMX supplémentaire au centre du plateau (nous apportons des rubans led et un contrôleur dmx)
- Une conversion DMX 5-pin to 3-pin

Filtres:

- 1x L117 pour 1 découpe 1kW
- 2x L201 pour 1 découpe 1kW
- 4x L241 pour 1 PC 1kW
- 14x L117 pour PC 1kW
- 2x L201 pour Fresnel 1kw

5. HORAIRES DE MONTAGE ET DÉMONTAGE

Temps de montage: nous avons besoin de 2 jours de montage avant le jour de la performance avec une répétition générale dans la soirée la veille de la première

Horaires:

- Jour 1:** 10:00 Arrivée de l'équipe , installation + déchargement
11:00 début du montage
13:00 pause de midi
14:00 suite du montage
18:00 Fin du jour 1
- Jour 2:** 10:00 début du montage
11:00 arrivée de l'accordeur + suite du montage
13:00 pause de midi
14:00 suite du montage
18:00 pause du soir
19:00 suite du montage
20:00 générale
22:00 Fin du jour 2
- Jour 3:** 11:00 Mise
13:00 arrivée de l'accordeur pour un deuxième accordage / pause de midi
14:00 sound check + tests lumière + répétition piano
18:00 pause du soir
19:00 nettoyage plateau
20:00 (ou plus tôt) performance
- Day 4:** 10:00 démontage + chargement
14:00 fin

6. ÉQUIPE TECHNIQUE ET ARTISTIQUE + PERSONNEL DEMANDÉ

Équipe technique et artistique

- 2 techniciens (lumière/plateau/ son)
- 1 artiste
- 1 performeur/pianiste

L'organisateur prévoir :

- 4 techniciens les jour de montage
- 2 techniciens le jour de la première performance
- 1 technicien en permanence pendant les jours de performance suivants s'il y en a.
- 4 techniciens pour le démontage

- Un accordeur le 1ier jour (voir horaire/planning: 11:00) et le deuxième jour (voir horaire/planning: 13:00). S'il y a un troisième jour 13:00 etc.

Remarque:

- Si c'est possible nous aimerions avoir le nom de la compagnie ou de l'accordeur à l' avance .
- Merci de nous informer des horaires du lieu ainsi que du règlement. Si possible nous aimerions travailler avec la même équipe pendant toute la durée de notre séjour.

7. STOCKAGE

- Nos flights et outils doivent être entreposée dans un lieu de stockage sécurisé.

8. TRANSPORT

- Nous voyageons avec un camion de 7m de long, 2,5m de large et 3,1m de ht avec hayon
- Merci de prévoir un parking sécurisé pour le camion durant la totalité de notre séjour/tournée

9. SECURITE

- Indépendamment des points d'accroches les grilles sont équipées d'élingues de sécurité en cas de défaillance de l'un des points d'accroche.
- Foss decor est un produit de Snow Business International. La classification anti-feu répond à la norme DIN4102 - voir "Prüfzeugnis" en annexe. Vermiculite est un produit NESTAAN. C'est un matériau naturellement anti-feu de par sa composition en mica (utilisé pour les portes anti-feu).
- Vous trouverez en annexe les fiches de données de sécurité des 2 matériaux.
- Nous apportons aussi une gaze transparente (en tulle gobelin) de 12x9m classée M1, voir le document de certification en annexe.

IMPORTANT

- Informations demandées: Nom et no de téléphone du directeur technique
- Nom de la responsable production; no de tel des backstage et de la billetterie.
- Un régisseur général parlant couramment français ou anglais (ou un-e traducteur-trice).
- Le matériel demandé doit être disponible dès notre arrivée.
- Il est de la responsabilité de l'organisateur de s'assurer qu'il est bien couvert par une assurance et que le décor de la compagnie, son matériel ainsi que de ses effets personnels sont sécurisés. L'organisateur est responsable en cas de perte, dommage ou vol.
- **Filmer, photographier ou enregistrer sous quelque forme que ce soit ne peut se faire qu'après concertation préalable avec Karl Van Welden.**
- Les photos ainsi que les textes destinés à être publiés ou utilisés à des fins promotionnelles doivent être choisis et rédigés en accord avec Karl van welden.
- Lors de notre arrivée nous aimerions recevoir une liste des services suivants: urgences, service d'ambulances, dentiste, ostéopathe, kinésithérapeute et masseur-euse.
- Toute modification des exigences techniques susmentionnées doit être discutée avec la compagnie.
- Les exigences techniques font partie intégrante du contrat entre wp Zimmer et l'organisateur, et doivent être respectées comme telles.

GÉNÉRIQUE

Concept | Création | Son | Composition: Karl Van Welden – *Dramaturgie:* Bart Capelle – *Son | Composition | Pianiste:* Frederik Croene – *Son | Composition | Ingénieur son:* Vincent Malstaf – *Machinerie | Réalisation:* Maarten De Vrieze – *Création lumière:* Jelle Moerman – *Production:* wpZimmer (BE) – *Coproduction:* Vooruit (BE) | Gessnerallee (CH) | Uzès Danse (FR) | Le Vivat (FR) | IN SITU: TAKT Dommelhof (BE) | La Strada (AT) | METROPOLIS (DK) – *Avec le soutien du Gouvernement flamand | muziek LOD (BE) – Merci à:* Pianos Maene

Contact



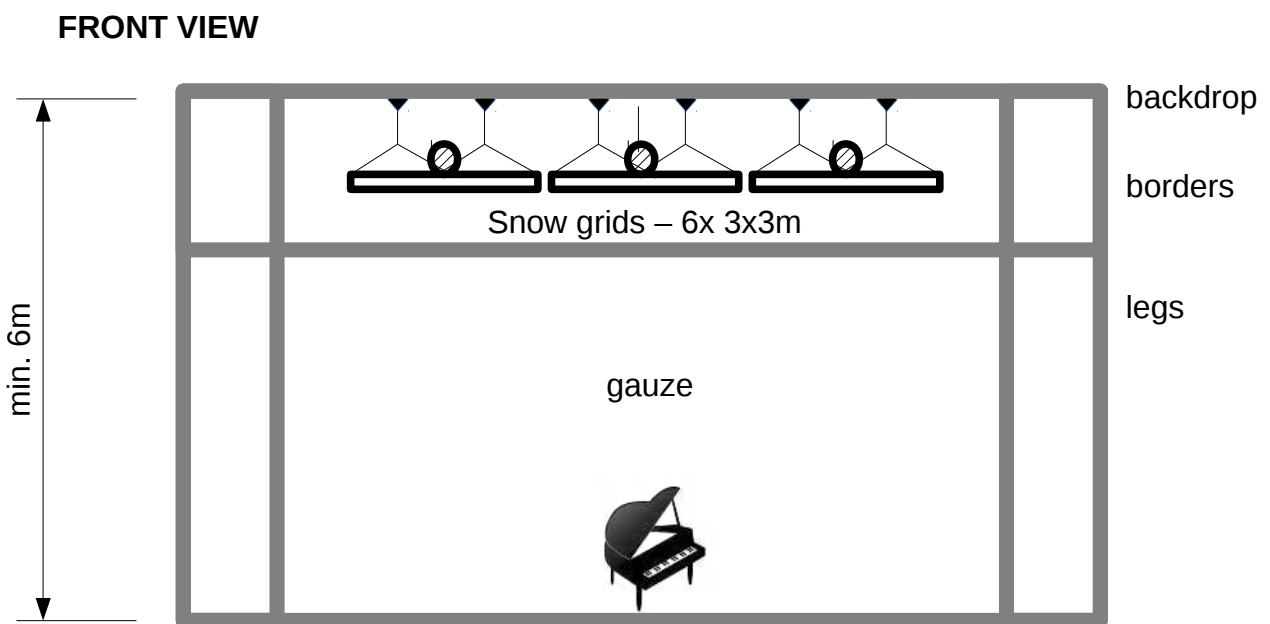
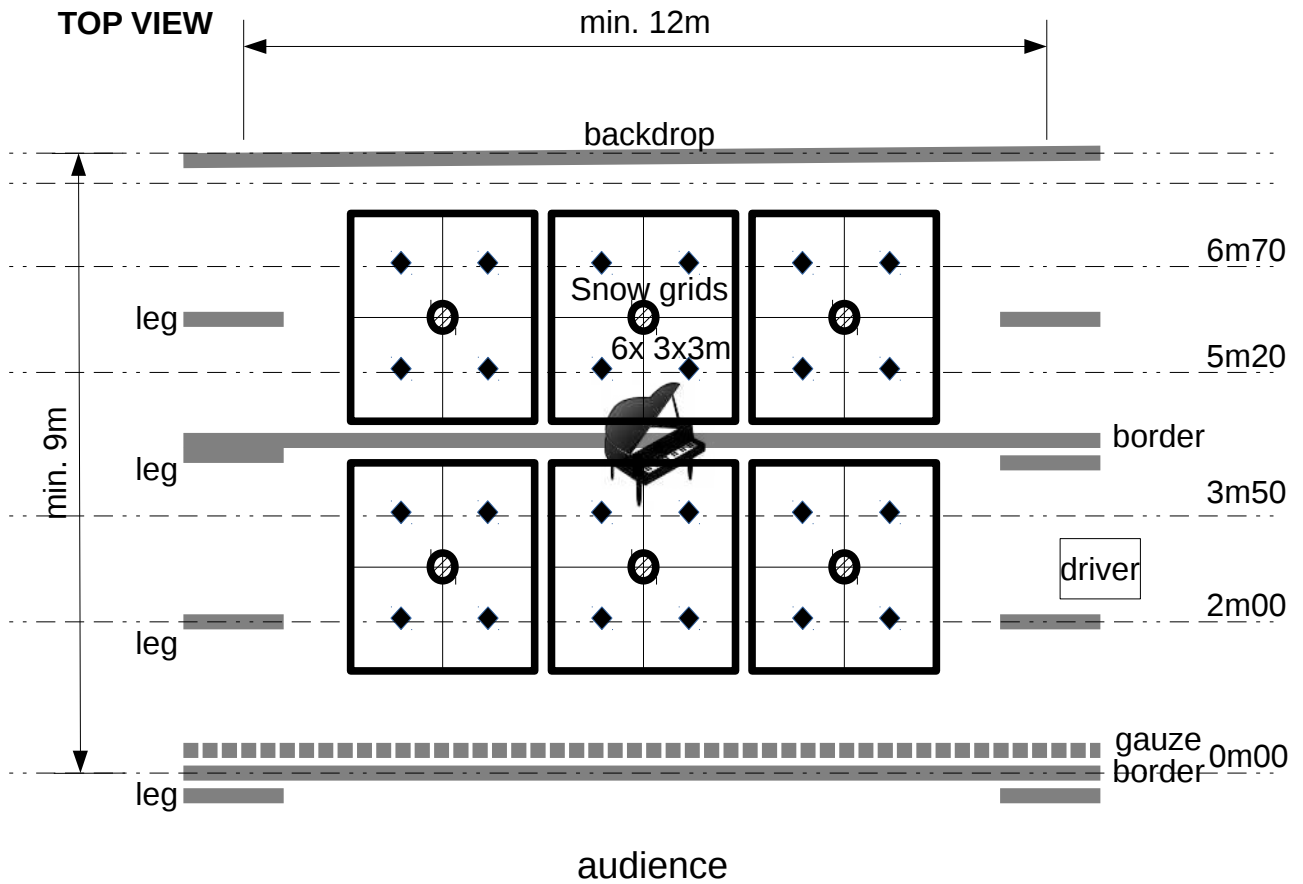
wpZimmer vzw
Gasstraat 90, BE-2060 ANTWERPEN
+32 3 225 10 66
+32 476 54 16 48
patrick@wpzimmer.be
www.wpzimmer.be

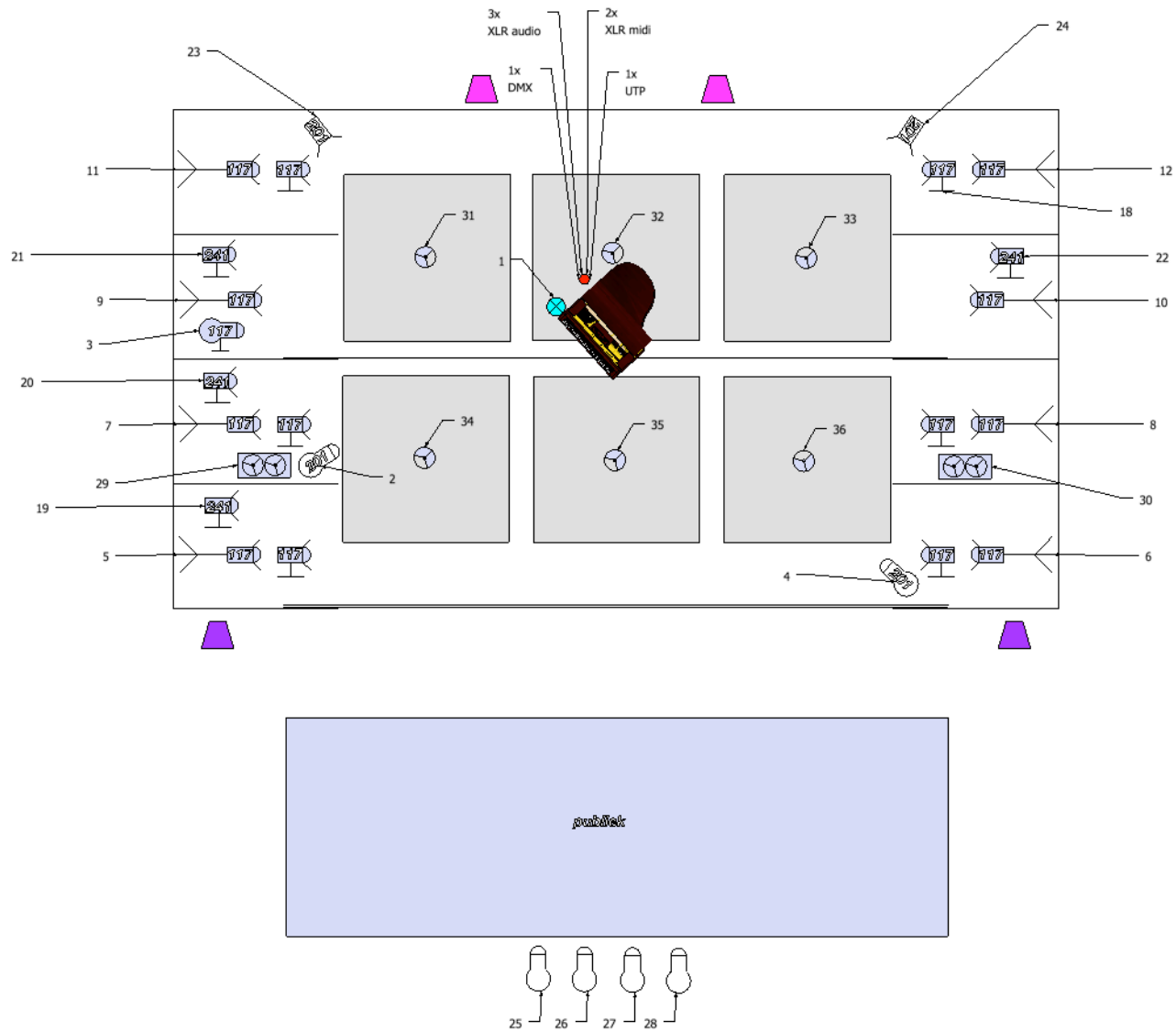
CoordinationTechnique
Peter De Goy
+32 497 80 90 40
peter@wpzimmer.be

Artiste
Karl Van Welden
+32477 58 52 09
karl@verenigdeplaneten.be
www.karlvanwelden.be
www.unitedplanets.be





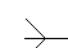






Stage plot

- Black curtain
- Hanging point 24x
- Butt kicker 6x





LEGEND:

-  profile on floor stand
-  profile suspended
-  profile suspended
-  profile suspended
-  PC on floor stand
-  PC on high stand
-  FRESNEL suspended
-  2 ventilators on tower (or high stand)
-  ventilator above grid
-  PA speakers
-  full range speaker on floor (behind backdrop)



Material Safety Data Sheet –

In accordance with 91/155/EEC

1. Identification of substances

- 1.1 Trade Name: Foss decor
 - 1.2 Supplier: Snow Business International Ltd, The Snow Mill, Ebley, Stroud, Glos GL5 4TR, United Kingdom.
 - 1.3 Contact: Symon Doliczny
 - 1.4 Telephone: +44 (0) 1453 840088
 - 1.5 Applications Artificial dressed and falling snow effects
-

2 Hazards Identification

- 2.1 Classification of the substance or mixture
- 2.2 Classification according to Directive 671548/EEC or Directive 1999145/EC
- 2.3 Information concerning particular hazards for human and environment: The molten product adheres to the skin and causes burns. Spilled material may present a slipping hazard
- 2.4 Classification system: This product is, according to EEC directives 1999145, 671548, Regulation 190712006/EC, and following amendments, not classified as hazardous.
- 2.5 Label elements
Labelling according to EU guidelines: Not classified
- 2.6 Other hazards
Results of PBT and vPvB assessment
PBT: Not applicable.
vPvB: Not applicable

Snow Business

The Snow Mill, Bridge Road, Ebley, Stroud,
Glos, GL5 4TR Tel: +44 (0) 1453 840088
www.snowbusiness.com

Reg in England, Co # 3188135. VAT # GB618344930





3 Composition / information on ingredients

- 3.1** Chemical characterization: Substances
- 3.2** CAS No. Designation
9002-88-4 1-ethene homopolymer
- 3.3** Chemical characterization: Mixtures
- 3.4** Description: low density polyethylene
- 3.5** Dangerous components: Void
- 3.6** Additional information Can contain additives

4 First Aid Measures

- 4.1** Description of first aid measures
- 4.2** General information
At room temperature the product is neither an irritant nor gives off hazardous vapours. The measures listed below apply to critical situations (Fire, incorrect process conditions).
- 4.3** After inhalation In case of excessive inhalation offi1mes move the person to fresh air. Call for medical help.
- 4.4** After skin contact
After contact with the molten product, cool rapidly with cold water. Do not pull solidified product away from the skin Seek immediate medical advice.
- 4.5** After eye contact Rinse opened eye for several minutes under running water.
- 4.6** After swallowing No specific measures have to be taken if the product is swallowed.
- 4.7** Information for doctor
Most important symptoms and effects, both acute and delayed No further relevant information available.
Indication of any immediate medical attention and treatment needed No further relevant information available.

5 Firefighting Measures

- 5.1** Extinguishing media
- 5.2** Suitable extinguishing agents
Water haze
Foam
Chemical powder
- 5.3** For safety reasons unsuitable extinguishing agents- water jet

Snow Business

The Snow Mill, Bridge Road, Ebley, Stroud,
Glos, GL5 4TR Tel: +44 (0) 1453 840088
www.snowbusiness.com

Reg in England, Co # 3188135. VAT # GB618344930





- 5.4** Special hazards arising from the substance or mixture
In case of fire it can release water (H₂O), carbon dioxide (CO₂), and when lacking oxygen (O₂), carbon monoxide (CO)
The products of the burning are dangerous
- 5.5** Advice for the firefighters
Protective equipment
Use a mask with universal filter
Use self contained breathing apparatus within confined rooms
- 5.6** Additional Information
Heat Value:12.2kWh/kg

6 Accidental Release Measures

- 6.1** Personal precautions, protective equipment and emergency procedures Particular danger of slipping on leaked/spilled product.
See point 8
- 6.2** Environmental precautions: No special measures required. See points 12 and 13.
- 6.3** Methods and material for containment and cleaning up: Recycle product or dispose properly.
See point 13
- 6.4** Reference to other sections Collect spilled polymer: It could cause falls (Danger of slipping).

7 Handling and Storage

- 7.1** Handling
Precautions for safe handling
No special requirements necessary, if handled at room temperature.
When bringing the material to processing temperatures gases might develop, forming: ethylene and alkenes of higher molecular weight. Traces of formaldehyde and acrylaldehyde traces of acids (Formic acid, acetic acid)
Provide appropriate ventilation for such processing conditions.
Take precautionary measures against explosion risks, as all types of polymer may develop dust during transporting or grinding of granules.
Prevent formation of dust.
Avoid spilling the product, as this might cause falls.
Conditions for safe storage, any incompatibilities

Snow Business

The Snow Mill, Bridge Road, Ebley, Stroud,
Glos, GL5 4TR Tel: +44 (0) 1453 840088
www.snowbusiness.com

Reg in England, Co # 3188135. VAT # GB618344930





7.2 Storage

Requirements to be met by store rooms and containers

Take precautionary measures to prevent the information of static electricity

Do Not Smoke

Ground equipment electrically

Open flames prohibited

Information about in one common storage facility: Not required

Further information about storage conditions

Protect from heat and direct sunlight

Store container in a well ventilated position

Store under dry conditions

Do not stack up the octabins

Specific end use(s). For safe stacking follow the storage recommendations specific to this product.

8 Exposure Controls / personal protection

Additional information about design of technical systems: No further data; see item 7

8.1 Control parameter

Components with limit values that require monitoring at the workplace: Not required

Additional exposure limit values for possible processing dangers:107-02-8 acrylaldehyde

WEL I Short-term value: 0.7 mg/m³ 0.3 ppm

Long-term value: 0.23 mg/m³ 0.1 ppm

50-00-0 formaldehyde

WEL I Short-term value: 2.5 mg/m³ 2 ppm

Long-term value: 2.5 mg/m³ 2 ppm

64-18-6 formic acid

WEL I Long-term value: 9.6 mg/m³ 5 ppm

8.2 Additional information Void

Snow Business

The Snow Mill, Bridge Road, Ebley, Stroud,

Glos, GL5 4TR Tel: +44 (0) 1453 840088

www.snowbusiness.com

Reg in England, Co # 3188135. VAT # GB618344930





8.3 Exposure controls

Personal protective equipment

General protective and hygienic measures Do not eat, drink or smoke while working.

Breathing equipment: Use breathing protection in case of insufficient ventilation.

Protection of hands: Heat resistant gloves

Material of gloves

The selection of the suitable gloves does not only depend on the material, but also on further marks of quality and varies from manufacturer to manufacturer.

Penetration time of glove material

The exact break through time has to be found out by the manufacturer of the protective gloves and has to be observed.

Eye protection: Not required

9 Physical and Chemical Properties

9.1 Information on basic physical and Chemical

General Information

Appearance:

Form: Pellets

Colour: Neutral
various colours

Odour: Nearly odourless

9.2 Change in condition

Melting point/Melting range: 50-140 °C

Boiling point/Boiling range: Not applicable

9.3 Flash point: Not applicable (see attachment to guideline 92169/EEC, A.9)

9.4 Ignition temperature 360°C

9.5 Danger of Explosion Product is not explosive see point(s)7

9.6 Density at 20°C 0.9-0.97g/cm³

9.7 Solubility in I Miscibility with

Water: Insoluble

Other information Soluble in boiling, aromatic chlorinated solvents

10 Stability and Reactivity

10.1 Reactivity

10.2 Chemical stability

Snow Business

The Snow Mill, Bridge Road, Ebley, Stroud,

Glos, GL5 4TR Tel: +44 (0) 1453 840088

www.snowbusiness.com

Reg in England, Co # 3188135. VAT # GB618344930





- 10.3** Thermal decomposition I conditions to be avoided:
The product is stable when handled and stored under normal conditions. Decomposes over 360 °C.
- 10.4** Possibility of hazardous reactions No dangerous reactions known
- 10.5** Conditions to avoid No special precautions necessary if used correctly.
- 10.6** Incompatible materials: No special requirements.
- 10.7** Hazardous decomposition products: No hazardous decomposition products known at room temperature

11 Toxicological Information

- 11.1** Information on toxicological effects
Acute toxicity:
- 11.2** Primary irritant effect:
On the skin: No irritant effect.
On the eye: No irritant effect.
Sensitization: No sensitizing effect known.
- 11.3** Additional toxicological information:
When used and handled according to specifications, the product does not have any harmful effects according to our experience and the information provided to us.

12 Ecological Information

- 12.1** Toxicity
Aquatic toxicity: No further relevant information available.
- 12.2** Persistence and degradability No further relevant information available.
- 12.3** Other information: The product is not biodegradable.
- 12.4** Behaviour in environmental systems:
Bio accumulative potential Floats on water.
There is no bioaccumulation.
In soil No further relevant information available.
Additional ecological information

Snow Business

The Snow Mill, Bridge Road, Ebley, Stroud,
Glos, GL5 4TR Tel: +44 (0) 1453 840088
www.snowbusiness.com

Reg in England, Co # 3188135. VAT # GB618344930





12.5 General notes:

The product is not toxic, small particles can have physical effects on water and soil organisms.

Results of PBT and vPvB assessment

PBT: Not applicable.

vPvB: Not applicable.

Other adverse effects No further relevant information available.

13 Disposal Considerations

13.1 Waste treatment methods

Recommendations

Reuse or recycle if possible

Disposal through controlled incineration or authorised waste dump

European waste catalogue 070213

Uncleaned packagings

Recommendation: Disposal must be done according to official regulations

14 Transport Information

UN-Number

ADR, ADN, IMDG, IATA Void

UN proper shipping name

ADR, ADN, IMDG, IATA Void

Transport hazard class(es)

ADR, ADN, IMDG, IATA

Class Void

Packing group

ADR, IMDG, IATA Void

Environmental hazards: Not applicable.

Transport in bulk according to Annex II of

MARPOL 73178 and the /BC Code Not applicable.

Transport/Additional information: According to national and international guidelines, which regulate the road-, rail-, air- and sea transport, this product is classified as not dangerous.

Snow Business

The Snow Mill, Bridge Road, Ebley, Stroud,

Glos, GL5 4TR Tel: +44 (0) 1453 840088

www.snowbusiness.com

Reg in England, Co # 3188135. VAT # GB618344930





15 Regulatory Information

- 15.1 Safety, health and environmental regulations/legislation specific for the substance or mixture
Chemical Substance Control Law
Existing Chemical Substances 9002-88-4 1-ethene homopolymer
- 15.2 Specified Chemical Substances
None of the ingredients is listed
- 15.3 Monitoring / Type 11 Monitoring (before amendment) Chemical Substances
None of the Ingredients is listed
- 15.4 Priority Assessment Chemical Substances
None of the ingredients below
- 15.5 Chemical Substances Relating to a Public notice pursuant to the Provisions of a Paragraph 4 or Article 4 of the Former Act
None of the ingredients listed
- 15.6 Toxicity test results
None of the ingredients listed
Designation according to EC guidelines: Not classified
Chemical safety assessment: A Chemical Safety Assessment has not been carried out.
-

Compilation date **04/06/2015**

Approved **Symon Doliczny**

Reviewed by

The statements in this bulletin were made to the best of our knowledge and are as accurate as possible. They are given for information only. They do not constitute a contractual guarantee of a product's properties. They must neither be altered nor transferred to other products.

Snow Business

The Snow Mill, Bridge Road, Ebley, Stroud,
Glos, GL5 4TR Tel: +44 (0) 1453 840088
www.snowbusiness.com

Reg in England, Co # 3188135. VAT # GB618344930



PRÜFZEUGNIS

PZ-Hoch-130777-2

for the proof of Fire behavior according to DIN 4102, part 1 and part 14

Translation of the German test report – no guarantee for translation of technical terms

company	Snow Business International Limited The Snow Mill Bridge Road Ebley Gloucestershire, GL5 4TR United Kingdom
description of samples	decor snow made of pe-film
name of the material	„Foss Decor“
sampling	by the company "Snow Business GmbH", Ladbergen
content of request	Proof of flammability to classify building materials to class B1 "schwerentflammbar" according to DIN 4102, part 1 and part 14
validity of test report	30.06.2018
result	The decor snow (with a thickness about 20 mm) meets applied on massive mineral material with a density $\geq 1800 \text{ kg/m}^3$ the requirements of class B1 for „schwerentflammbare“ (hardly flammable) floorings according to DIN 4102, part 1 (Mai 1998) and part 14 (Mai 1990).

This test report includes 3 pages and 2 enclosures.

Remark: If the above mentioned building material is not used as product according to MBO § 2, Abs. 5, Ziffer 1, there is no need for a general building supervisory test report.

This test report is not valid if the examined building material is used as product in the meaning of state building prescriptions (MBO § 17, Abs. 3).

This test report does not replace an eventually necessary proof of applicability concerning building supervisory or building laws in the meaning of state building prescriptions. This has to be verified by:

- „allgemeine bauaufsichtliche Zulassung“ (general building inspectorate approval) or by
- „allgemeines bauaufsichtliches Prüfzeugnis“ (general building inspectorate certificate) or by
- „Zustimmung im Einzelfall“ (exceptional approval)

This test report can underlie building supervisory procedures

- for regular building products for the prescribed proofs of conformity
- for non regular building products for the needed proofs of applicability.

This test report must not be published and copied without preceding agreement of the test laboratory and if agreed, only during validity and unchanged concerning appearance and contents.



1. Description of test material in condition as delivered

PN 17520 „Snow Fall“ decor snow made of pe-film
 characteristic values determined by the test laboratory
 granulation ca. 5 mm bis 40 mm

The testing laboratory is not provided with further details concerning composition of the tested building materials. Samples are deposited.

2. Preparation of samples

For building up the samples boxes of fiber-cement boards (with thickness 5 mm, density 1900 kg/m³) were built, with a height of 20 mm. Into this boxes we put the snow (thickness about 20 mm and area weight about 0.3 kg/m²).

The samples were kept in climate chamber 23/50 until they reached constant weight.

3. Arrangement of samples #1328: decor snow

4. Date of test 04.07.2013

5. Results The test has been examined according to DIN 4102-14 (May 1990)

#1328	specimen 1	specimen 2	specimen 3	specimen 4	average value
max. burning distance [cm]	5	0	—	-	2,5 cm
self-extinguishing of the flames [min. sek]	2:45	— (no ignition)	—	-	—
end of test [min. sek]	30:00	30:00	—	-	—
critical radiation intensity I [W/cm ²]	≥ 1,1	≥ 1,1	—	-	≥ 1,1 W/cm ²
max. density of smoke [%]	0,8	0,8	—	-	0,85 %
smoke production [%/min]	12,4	11,1	—	-	11,8 %/min

According to DIN 4102, part 1, "schwerentflammbar" (hardly flammable) building materials must meet the requirements of class B2.

Pursuant to additional tests in the ignitability apparatus this can be determined (appendix 2).

6. Explanations concerning the testing procedure

The decor snow melted after about 20 seconds. Only in sample 1 for a short time became the melting catch fire after touching with the pilot burner and then go out again after about 2:45 minutes. Since the critical light intensity > 1.0 W / cm², and the smoke development to be < 300% min in the first two experiments, we reduced the number of attempts.

7. Special remarks

- This report is only valid for the material as described under paragraph 1. In combination with other materials or with additional coatings or grounds etc. the burning behaviour may differ.
- This test report is not valid for the exposure to outdoor climate conditions.
- This test report is not valid, as soon as the fabric is used as a building product in the sense of the "Landesbauordnungen" (state building requirements, MBO § 17, par. 3).
- This test report is no substitute for a General Building Inspectorate Certificate.
- In General Building Inspectorates procedures this test report can be based for
 - regular building materials for the required proof of accordance
 - for not regular building materials for the required proof of applicability
- For legal interests only the German original version is relevant.

8. Validity

This test report is valid until the mentioned date on page 1. The test report becomes invalid in case the standards on which the tests are based are changed.

Fladungen, 18.02.2014

clerk in charge


(Dipl.-Ing. (FH) Diana Gützel)



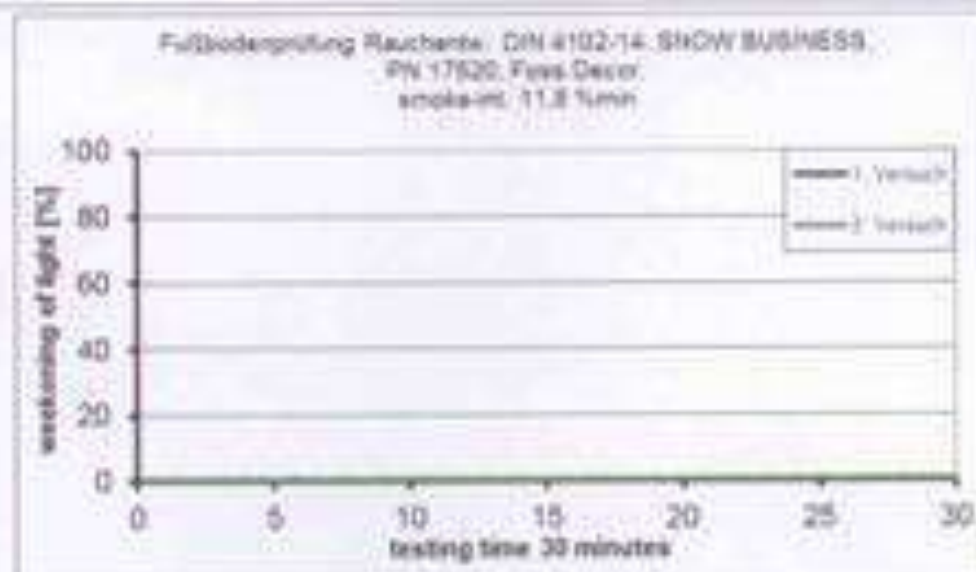
Head of the test laboratory


(Dipl.-Ing. (FH) Andreas Hoch)

test #1326



measurement



Test for normal flammability

classifying B2 according to DIN 4102

1. Description of test material in condition as delivered look at page 2
2. Preparation of samples
The debris show were pour in the sample holder for loose fillers (according to DIN EN ISO 11925-2 clause 4.5 c.)
The samples were kept in a climate 23/50 until they reached constant weight.
3. Arrangement of samples -freely suspended-
4. Date of test 03.07.2013
5. Versuchsmaßnahme

„Snow Fall“ PN17020	edge-test					surface-test					
	1	2	3	4	5	1	2	3	4	5	
samples no.											
ignition ¹⁾	-	-	-	-	-	5	8	6	5	4	s
reaching the mark of measurement ²⁾	-	-	-	-	-	/	/	/	/	/	s
max. flame height	-	-	-	-	-	5	5	4	0	0	cm
time	-	-	-	-	-	15	15	15	15	15	s
self-extinguishing of the flames ¹⁾	-	-	-	-	-	19	/	/	/	/	s
end of glowing ¹⁾	-	-	-	-	-	/	20	20	20	20	s
flames were extinguished after ¹⁾	-					little					
smoke development (visual)	-	-	-	-	-	/	/	/	/	/	s
Appearance after test: melted max. height 6 cm											

¹⁾ time mentioned from the beginning of the test ²⁾ during 20 Sec. /- no appearance - no information

6. Remarks and explanations to the testing procedure - none -
7. Opinion concerning the dropping of burning material
The test for normal flammability shows no burning dripping material.



NESTAAN NV
Z.I. Tournai Ouest II
Rue du bois des Hospices 2
7522 Blandain—Belgium

Tel. +32/69.77.83.20
Fax. +32/69.22.95.27
nestaan@nhb.be
www.nestaan.be

MATERIAL SAFETY DATA SHEET	Review : 1
	Date : 21.03.2012
	Replaces : 30.04.2008

Exfoliated Vermiculite



Producer:
Nestaan NV
Zone Industrielle Tournai Ouest 2
B-7522 Blandain
Tel : +32 (0)69.77.83.20 Fax : +32 (0)69.22.95.27

1. IDENTIFICATION OF THE MATERIAL

Vermiculite is a natural mineral consisting of aluminum silicate. The exfoliation process is realized at a high temperature. The exfoliated product is totally sterile.
Chemical identification : CAS NO. 1318-00-9

2. INFORMATION ON THE COMPOSITION

Vermiculite is composed of a laminary complex of aluminum, magnesium, calcium, iron and silicate.

3. DANGERS

The only possible dangers issuing from vermiculite, are possible irritations by its dust or possibly, in case the material is wet, the risk of slipping.

Vermiculite is not classified dangerous according to the regulations of the E.U.

DOC71-3 MSDS



NESTAAN NV
Z.I. Tournai Ouest II
Rue du bois des Hospices 2
7522 Blandain—Belgium

Tel. +32/69.77.83.20
Fax. +32/69.22.95.27
nestaan@nhb.be
www.nestaan.be

4. EMERGENCY MEASURES

General :	In case of any doubt or when the symptoms persist, a medical doctor should be consulted.
Measures in case of :	
-Inhalation :	Can cause minor irritations of the bronchial tubes in case of very heavy exposure to dust. Bring the person outside in fresh air.
-Contact with the skin :	Can cause minor dehydration in case of very long exposure. Rinse with abundant water and mild soap.
-Contact with the eyes :	The dust can cause a minor irritation. Rinse immediately with abundant clean water during about 15 minutes. When needed consult an oculist..
-Swallowing:	No known effect on health situation. Drink sufficiently. When needed, consult a medical doctor.

5. MEASURES IN CASE OF FIRE

Vermiculite is incombustible. Fire class A1.

6. MEASURES TO BE TAKEN IN CASE OF AN ACCIDENT.

Minimize the dust by wetting the product.
Beware: when vermiculite is wet, there is a risk of slipping !

7. HANDLING AND STORAGE

Store INSIDE: Protect against Ultra Violet light that can harm the packaging and against rain. Vermiculite can absorb a very large quantity of liquid..

Don't put the pallets on each other to storage.
Vermiculite is incombustible and not explosive, you don't need to take measurements on this.

DOC71-3 MSDS



NESTAAN NV
Z.I. Tournai Ouest II
Rue du bois des Hospices 2
7522 Blandain—Belgium

Tel. +32/69.77.83.20
Fax. +32/69.22.95.27
nestaan@nhb.be
www.nestaan.be

8. MATERIAL FOR PERSONAL PROTECTION

General :	The usual safety precautions should be respected and taken into account.
-Protection against inhalation:	In case of a dusty environment, a protective mask with an air filter should be worn.
-Protection of the hands :	When needed wear protecting gloves .
-Protection of the eyes :	When needed wear protecting glasses.
-Protection of the body:	When needed, wear protective clothing, which is adapted to the presence of dust.

9. PHYSICAL AND CHEMICAL PROPERTIES

Colour/aspect :	Harmonica shaped particles in brown or golden colour
Density (g/cm ³) :	ca. 65-160 kg/m ³
pH in aqueous solution:	between +/- 6 en 7
Fusionpoint (°C) :	1330 °C
Odour :	None, odour less.

10. STABILITY AND REACTIVITY

Stability :	inert
-------------	-------

11. TOXICOLOGICAL INFORMATION

No single known toxicological effect.

12. ECOLOGICAL INFORMATION

No single known ecological implication.

13. CONSIDERATIONS REGARDING DESTRUCTION AND REMOVAL

Destruction and removal of the product should be assured in accordance with the local laws and regulations.

DOC71-3 MSDS



NESTAAN NV
Z.I. Tournai Ouest II
Rue du bois des Hospices 2
7522 Blandain—Belgium

Tel. +32/69.77.83.20
Fax. +32/69.22.95.27
nestaan@nhb.be
www.nestaan.be

14. INFORMATION ON TRANSPORT

No specifically required precautions to be taken.

15. REGULATORY INFORMATION

Vermiculite is non toxic.
The dust is classified as irritating.

16. OTHER INFORMATION

This Material Safety Data Sheet is realized in accordance with CE-regulations and guidelines. The information is provided in good faith but it may well be possible that it does not cover all items and subjects. It is the obligation of the user to evaluate and judge if it is safe to use or apply the product in a specific way, in a specific application or in a particular way and to comply with the appropriate local laws, rules and regulations to do so.

No liability whatsoever can either be accepted, derived or has been expressed by this document.

End of the document.

DOC71-3 MSDS



NESTAAN NV
Z.I. Tournai Ouest II
Rue du bois des Hospices 2
7522 Blandain—Belgium

Tel. +32/69.77.83.20
Fax. +32/69.22.95.27
nestaan@nhb.be
www.nestaan.be

TECHNICAL DATASHEET

Exfoliated Vermiculite Medium

Productdescription

Vermiculite is a mineral, which exfoliates like a harmonica, when rapidly heated at temperatures above 800°C and in this way becomes several times bigger than the original crude.

Product Physical Properties

Identification number : CAS N° 1318-00-9
Chemical formula : $(\text{Mg,Ca})_{0,7}(\text{Mg,Fe,Al})_6(\text{Al,Si})_8\text{O}_{22}(\text{OH})_{24}\cdot 8\text{H}_2\text{O}$
Density : 65-145 kg/m³ depending on the granulometrics and origine
Grade : 0,5 à 4 mm
Lambda : 0,05 à 0,08 W/m.K
PH : 5.5-10
Solubility : insoluble in water and organic solvents
Fire behaviour : incombustible – A1
Meltingpoint: $\pm 1350^\circ \text{C}$
Stability : insensible to atmosferic influences
Appearance: worm-like, brune or yellow
VOC-level : -

Asbestos free

Typical chemical composition

Silicon	SiO ₂	38-46 %
Aluminum	Al ₂ O ₃	10-16 %
Magnesium oxyde	MgO	16-35 %
Iron oxyde	Fe ₂ O ₃	5-13 %
Titanium oxyde	TiO ₂	1-3 %
Calcium oxyde	CaO	1-5 %
Kalium oxyde	K ₂ O	1-6 %
Moisture	H ₂ O	3-16 %
Others	/	1-2 %



NESTAAN NV
Z.I. Tournai Ouest II
Rue du bois des Hospices 2
7522 Blandain—Belgium

Tel. +32/69.77.83.20
Fax. +32/69.22.95.27
nestaan@nhb.be
www.nestaan.be

Application

- Building and construction (renovations & new)
- Agriculture and horticulture
- Packaging & Absorption
- Fireprotection
- Others like: animalfeed, substates, additives for paints, glue, plastering and odourbags

Packaging

- Bags of 100 liter by filling
- Big bags of 1200 liters by filling
- Bulk
- Others upon request

Transport

Classified as undangerous. Vermiculite is not polluting and is chemical inert.

Stability en reactivity

Inert

Stockage

Store inside in a dry place. It is recommended to wear a protective mask for people with breathing difficulties.

Pallets are not stackable (compression of the material)

Toxicologie

On short term: occasionally a small irritation off the eyes

On long term: nothing attended



NESTAAN NV
Z.I. Tournai Ouest II
Rue du bois des Hospices 2
7522 Blandain—Belgium

Tel. +32/69.77.83.20
Fax. +32/69.22.95.27
nestaan@nhb.be
www.nestaan.be

Emergency measure

Contact with the eyes:	rinse with abundant water
Contact with the skin:	no risk
Inhalation :	breath fresh air
Swallowing:	drink a lot of water

Remarks

Our advices or indications regarding technical applications, either in word, in written or by means of trials are provided in good faith, but do entirely remain without commitment, equally regarding possible protecting rights from third parties. It is the obligation of the user to evaluate and judge if it is safe to use or apply the product in a specific way, in a specific application or in a particular process and to comply with the appropriate local laws, rules and regulations to do so. Application, use and processing of the products takes place beyond our possibilities of control and therefore fall within the liabilities of the user. In case of any liability, for any or all damages this remains limited to the value of the delivered or processed goods. Vermiculite should be stored inside. Obviously we do guarantee the good quality of our products, such as specified according to the general conditions of sale and delivery.

GOBELINTULLE

TECHNICAL DATA SHEET

November 2015

Classic theatre sharktooth scrim for disappearing & appearing acts. Can also be used as large speaker gauze (because of excellent sound transparency) or for exhibition stands. Mesh size: H 1.25 mm x W 2.5 mm.

» ARTICLE CODE	» WIDTH	» LENGTH	» WEIGHT
3420 0450 #	450 cm	± 70 m	85 g/m ²
3420 0640 #	640 cm	± 70 m	85 g/m ²
3420 0810 #	810 cm	± 70 m	85 g/m ²
3420 0950 #	950 cm	± 70 m	85 g/m ²
3420 1100 #	1100 cm	± 70 m	85 g/m ²
3420 1200 #	1200 cm	± 70 m	85 g/m ²

» COMPOSITION

95% CO + 5% PES

» CARE INSTRUCTIONS



» FLAME RESISTANCE

NF P 92-503 (1995)

NEN EN ISO 6941/6065/6066

BS 5867 PART 2 TYPE B (1980)

CLASS M1

PASS

PASS

» AVAILABLE COLOURS



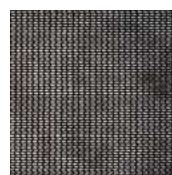
0001



0003



0005



0007



0030

ATTEST VLAMWERENDHEID

voor **VOR15163167**

WP Zimmer VZW

Karl Van Welden
Gasstraat 90
2060 Antwerpen
België

Showtex Contact: Bart Delporte

Uw referentie Project Mars II

Contact: Karl Van Welden

Datum :19/11/15

OND nr.:BE 0428.652.502

Klant nr.: 26244

1 X Stof	<i>GobelinTulle - 95% CO/5% PES</i>
Type	<i>Gaashorizondoek</i>
Kleur	<i>Zwart (Artnr: 3420 0640 0007)</i>
Spec	<i>Stofbreedte: 640 cm - Spec. Gew.:85 g/m²</i>
Norm	<i>Vlamwerend: BS 5867 part 2B - NF P 92-503 / M1</i>
Afmeting	<i>600 cm H x 1.200 cm B.</i>
Afwerking	<i>Bovenaan: singelband met zeilringen en knooplint om de 25 cm Linkerkant en Rechterkant: boordelastiek met zeilringen om de 100 cm Onderaan: open zoom 10 cm</i>

Hierbij bevestigt ShowTex NV dat bovengenoemd artikel GobelinTulle vlamwerend werd uitgerust volgens NF P 92-503 / M1,BS 5867 PART 2 B,NF P 92-503 / M1,NEN EN ISO 6941,NF P 92-503 / M1.

Opgelet: blootstelling aan vocht en reinigingsmiddelen kunnen de brandwerendheid van de stof verminderen.

ShowTex NV confirme que le tissu mentionné ci-dessus GobelinTulle est ignifugé selon NF P 92-503 / M1,BS 5867 PART 2 B,NF P 92-503 / M1,NEN EN ISO 6941,NF P 92-503 / M1.Attention : l'exposition à l'humidité et aux détergents peut réduire la résistance au feu du tissu.

ShowTex NV confirms that the above mentioned fabric GobelinTulle meets the flame retardant requirements according to NF P 92-503 / M1,BS 5867 PART 2 B,NF P 92-503 / M1,NEN EN ISO 6941,NF P 92-503 / M1.Attention: please mind that exposure to moisture and detergents can reduce the fire resistance of the fabric.

Hiermit bestätigt die Fa. ShowTex NV, dass oben ausgeführte Ware GobelinTulle schwerentflammbar nach NF P 92-503 / M1,BS 5867 PART 2 B,NF P 92-503 / M1,NEN EN ISO 6941,NF P 92-503 / M1 ausgerüstet ist.Achtung: bitte achten Sie darauf dass Einwirkung von Reinigungsmitteln und Feuchtigkeit die Feuerfestigkeit de

ShowTex NV certifica que el tejido GobelinTulle citado arriba cumple los requisitos ignifugos de acuerdo con NF P 92-503 / M1,BS 5867 PART 2 B,NF P 92-503 / M1,NEN EN ISO 6941,NF P 92-503 / M1.

Atención: Tenga en cuenta que la exposición al la humedad y detergentes pueden reducir la resistencia al fuego de la tela.

Norm: NF P 92-503 / M1

Analyserapport: 8393

Testlabo: Universiteit Gent

Norm: BS 5867 PART 2 B

Analyserapport: 56903/F

Testlabo: Centexbel

Norm: NF P 92-503 / M1

Analyserapport: 46497/P

Testlabo: Centexbel

Norm: NEN EN ISO 6941

Analyserapport:

Testlabo: Bolderdijk Brand Preventie

Norm: NF P 92-503 / M1

Analyserapport: CM-15-P-017

Testlabo: FCBA

ATTEST VLAMWERENDHEID

Pagina 2

voor **VOR15163167**

Uw referentie **Project Mars II**

Contact: **Karl Van Welden**

Datum :19/11/15

OND nr.:BE 0428.652.502

Klant nr.: **26244**

